

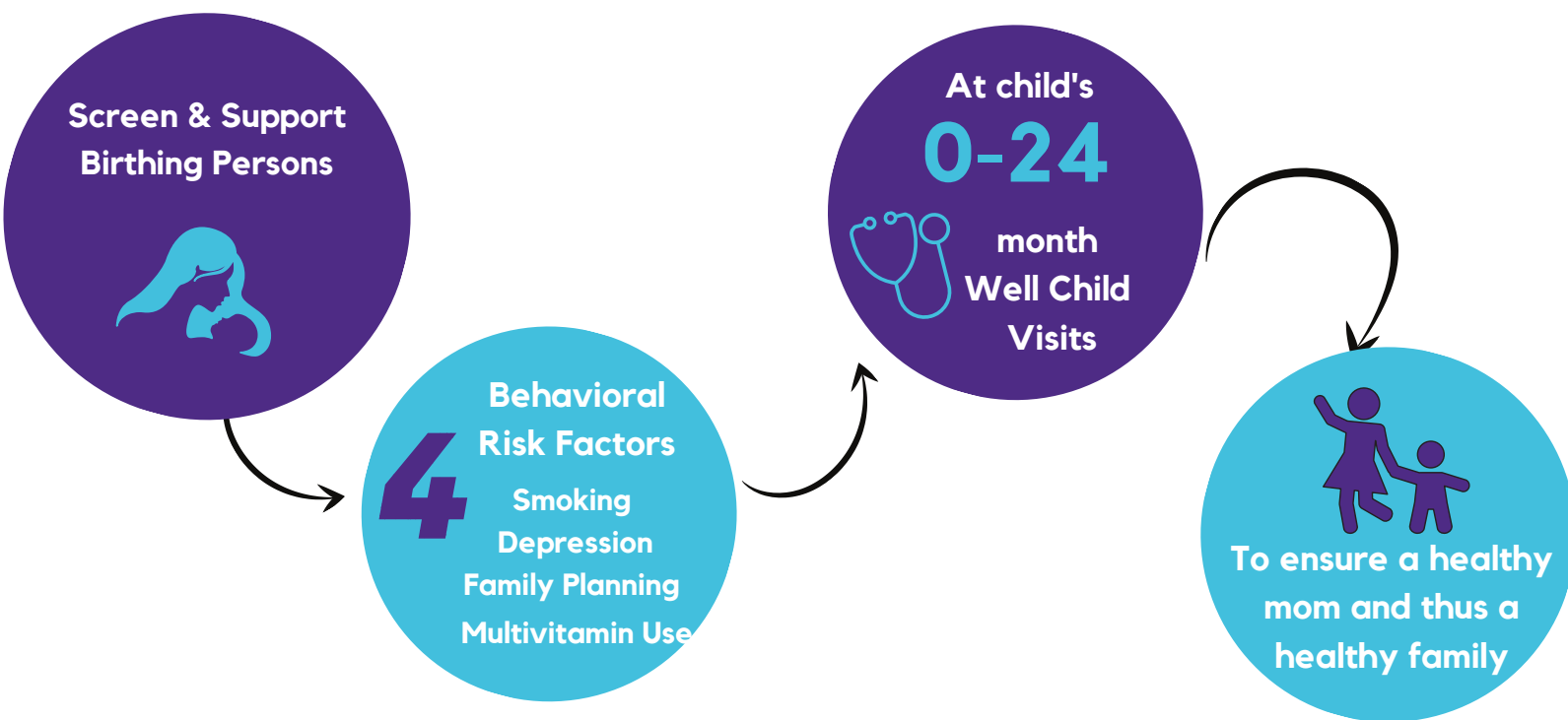
IMPLICIT NETWORK

Interventions to Minimize Preterm and Low birth weight Infants using Continuous Improvement Techniques

The IMPLICIT Network develops, implements, evaluates, and optimizes new and existing models of care focused on improving birth outcomes and the health of women, infants, and families.

Interconception Care (ICC)

ICC delivers care between pregnancies by screening women/birthing people at well child visits from 0-24 months to address 4 modifiable risk factors



ICC Stats

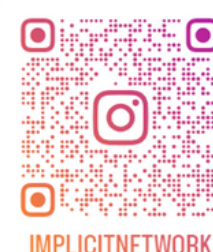
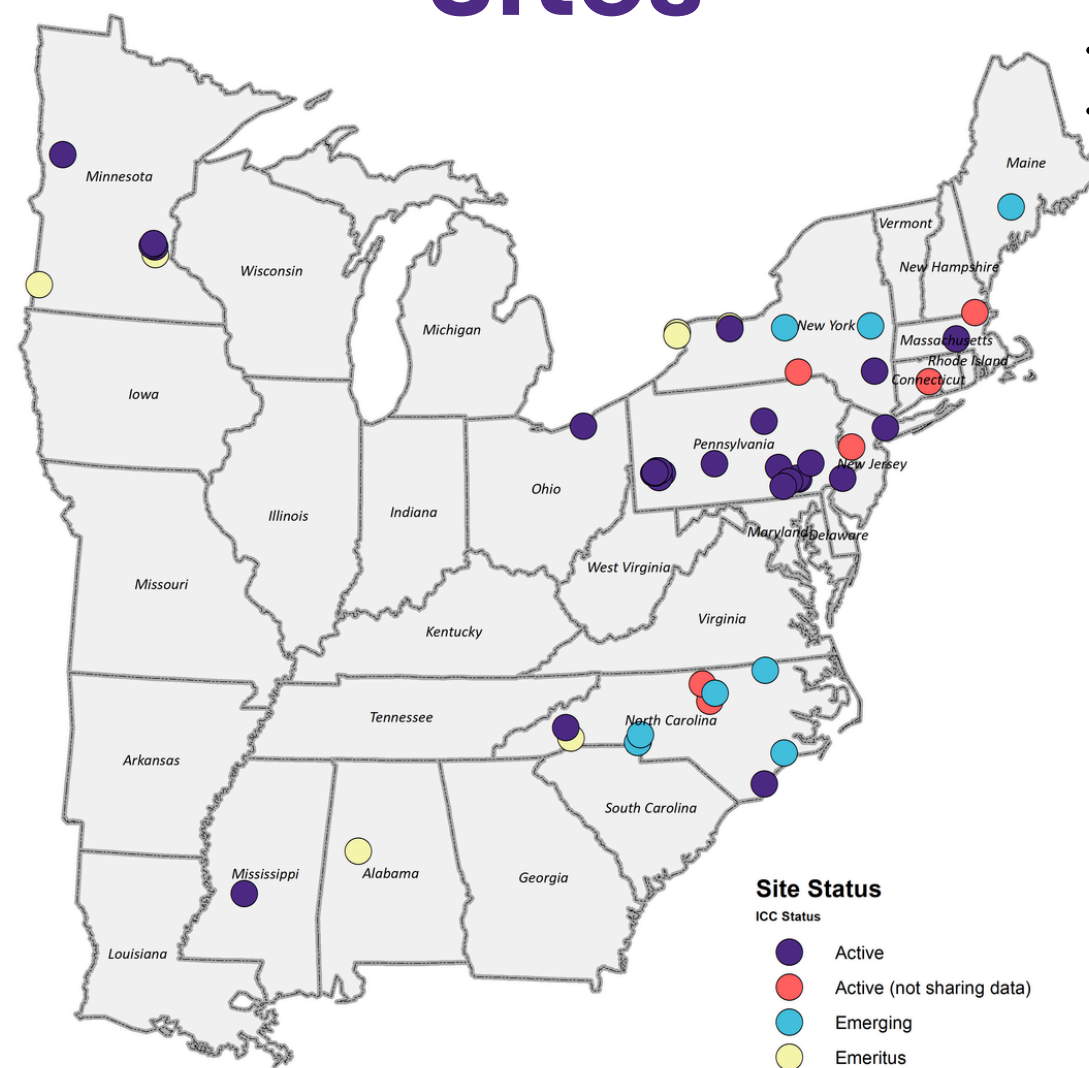
- 94%** of mothers/birthing people **attend** their child's well child visit.
- 93%** of mothers/birthing people are willing to **receive health advice** from their child's doctor.
- 64%** of mothers/birthing people **screened positive** for one or more ICC risk factors during a well child visit.

What are the risk factors?

- Smoking
- Depression
- Family Planning
- Multivitamin with Folic Acid



Sites



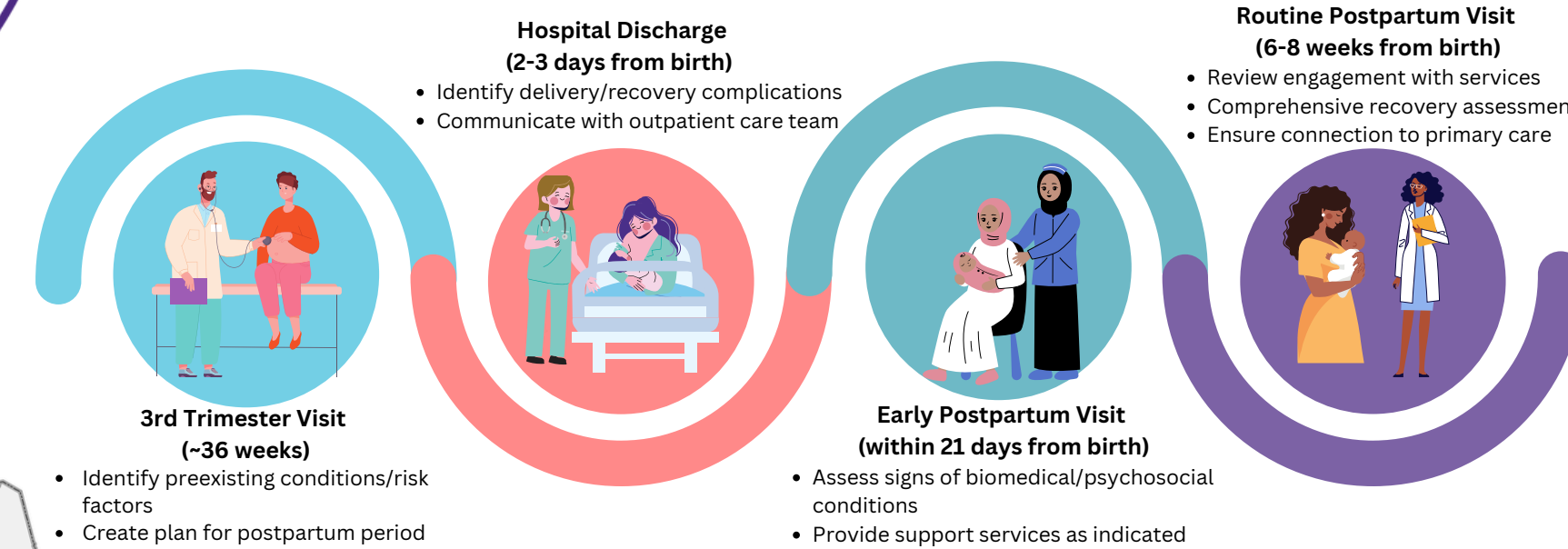
Follow Us!

@implicitnetwork

4th Trimester Model (4TM)

This model focuses on redefining postpartum care for women/birthing people by **assessing conditions and risks** in the prenatal, intrapartum, and early postpartum periods.

IMPLICIT 4th Trimester Care Model



Specific Aims of the 4th Trimester Care Model

IDENTIFY PATIENTS AT RISK

Patients who are at risk may have mood concerns, obesity/wound concerns, thyroid disorders, hypertensive disorders, endocrine disorders, renal disease, or substance abuse

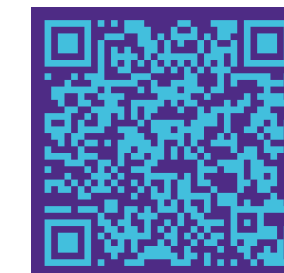
ATTEND THE EARLY VISIT

As many as 40% of women do not attend a postpartum visit. This program aims to get the patient back into see their doctor between 7 and 21 days after delivery.

ESTABLISH THE CARE TEAM

Postpartum care is often fragmented among multiple providers and settings. This program aims to connect patients with psychosocial, biomedical, and other wrap around services

Scan the QR codes for more information



FMEC/IMPLICIT Website



IMPLICIT ICC Toolkit